



NON-DENIM COLLECTION

🌐 @hashleytextiles.com
✉ info@hashleytextiles.com

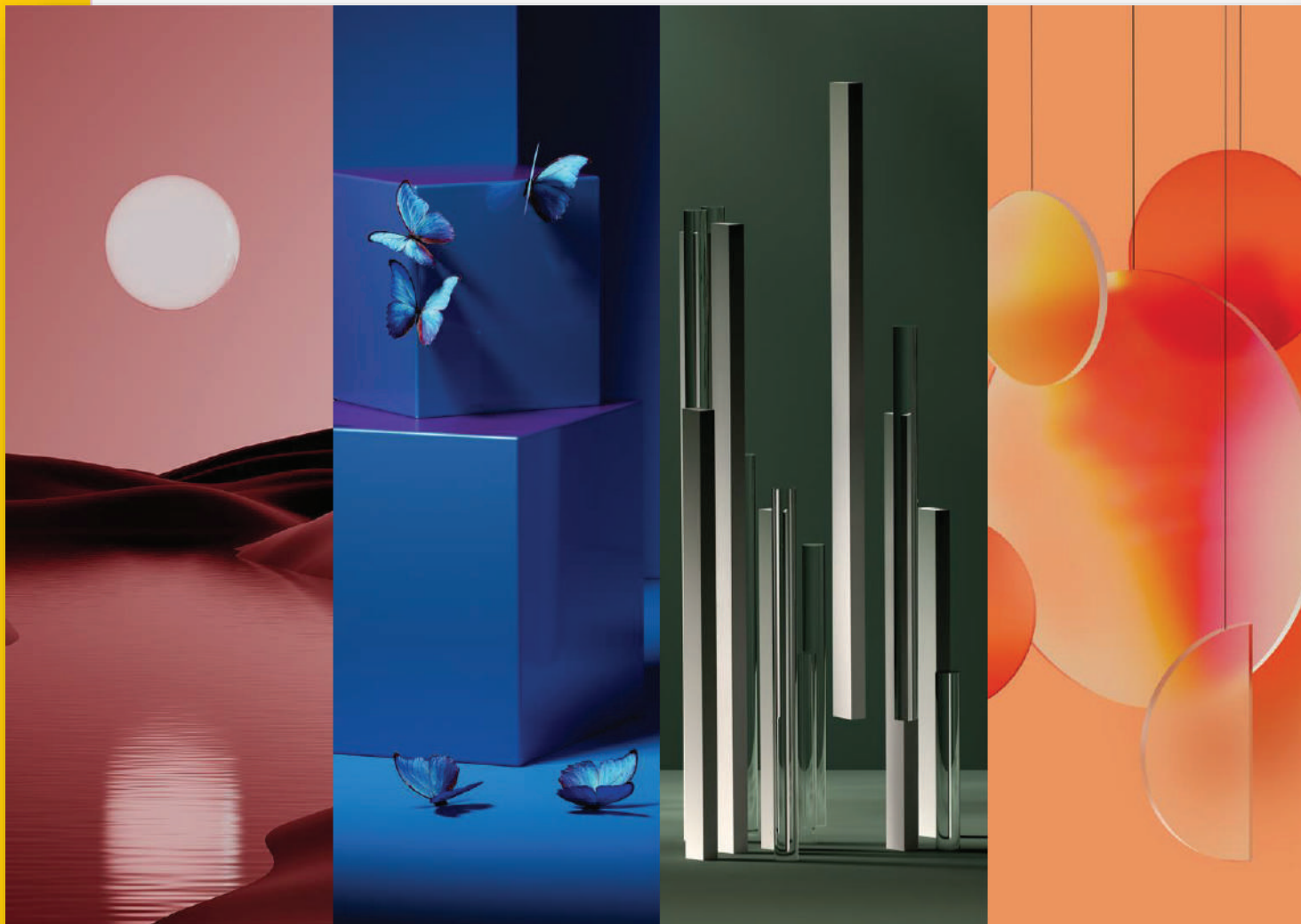




Innovative weave & Superior Composition

We build our garments knowing that your jeans tell a story and our jeans/Jogger are designed to be functional yet beautiful, comfortable, innovative.

We pay attention to every detail and utilize a vast array of techniques to produce distinctive finish, Making each pair unique.





FABRIC
AMB-JANNET -
09/00/63-R

Comp:
97% COTTON, 3%
SPANDEX

WEIGHT:
8.85 OZ

SMD: 33022



HASHLEY
TEXTILES LLC



HOME GREEN TERMS WEB EMAIL



FABRIC
AMB-SKIEN
00-00-9458
Comp:

WEIGHT:
OZ

SMD:



HASHLEY
TEXTILES LLC



HOME GREEN TERMS WEB EMAIL



FABRIC
AMB-A4-0501168-
ECRU

Comp:
100% COTTON

SMD: 33032



HASHLEY
TEXTILES LLC





FABRIC
AMB-FINN

Comp:
100% COTTON

WEIGHT:
OZ

SMD:



HASHLEY
TEXTILES LLC





FABRIC
AMB-NEYMER
11500-06
Comp:

WEIGHT:
OZ

SMD:



HASHLEY
TEXTILES LLC



HOME GREEN TERMS WEB EMAIL



FABRIC
AMB- UD-000275

Comp:
76 % CO₂ 21 % PES 3 %
Spdx

WEIGHT:
275 GSM

SMD: 33174





FABRIC
AMB-

Comp:

WEIGHT:
OZ

SMD:



HASHLEY
TEXTILES LLC





FABRIC
AMB-UD-00065

Comp:

WEIGHT:
OZ

SMD: 33152



HASHLEY
TEXTILES LLC





FABRIC
AMB-MARERICK-R-
24/00/30
Comp:
86% COTTON,
14% POLY

WEIGHT:
7.82 OZ

SMD: 33032



HASHLEY
TEXTILES LLC





FABRIC
AMB-HATHOR
00-00-2003-R
Comp:
100% COTTON

WEIGHT:
OZ

SMD:



HASHLEY
TEXTILES LLC



HOME GREEN TERMS WEB EMAIL



FABRIC
AMB-LEXO
41100-08
Comp:
100% COTTON

WEIGHT:
OZ

SMD:



HASHLEY
TEXTILES LLC





FABRIC
AMB-BALLEY
00-00-3244
Comp:
100% COTTON

WEIGHT:
OZ

SMD:



HASHLEY
TEXTILES LLC





FABRIC
AMB-Abel-

Comp:
99%,1

WEIGHT:
OZ

SMD:



HASHLEY
TEXTILES LLC





FABRIC
AMB-UD-00362

Comp:
98% COTTON
2.0% ELASTANE

SMD: 33159



HASHLEY
TEXTILES LLC



HOME GREEN TERMS WEB EMAIL



FABRIC
AMB-BROXY-1173

Comp:

WEIGHT:
OZ

SMD: 33057



HASHLEY
TEXTILES LLC





FABRIC
AMB-UD-000212

Comp:
61% CO 37% PES 2%
ELAST

WEIGHT:
320 GSM

SMD: 33174



HASHLEY
TEXTILES LLC





FABRIC
AMB-QCSA-13/A
0009

Comp:
98% COTTON
2.0% ELASTANE

WEIGHT:
7/8 OZ
SMD: 32811



HASHLEY
TEXTILES LLC



HOME GREEN TERMS WEB EMAIL



FABRIC
AMB-

Comp:

WEIGHT:
OZ

SMD:





FABRIC
AMB-SA-24/B

Comp:
99% COTTON,
1% ELAST

WEIGHT:
OZ

SMD: 32937



HASHLEY
TEXTILES LLC





FABRIC
AMB-MATTY-QCSA-
07/0009

Comp:
98% COTTON,
2% ELAST

WEIGHT:
7.80 OZ

SMD: 33029



HASHLEY
TEXTILES LLC



HOME GREEN TERMS WEB EMAIL



FABRIC
AMB- NODE-00-
9738

Comp:
97% COTTON, 3%
SPANDEX

WEIGHT:
11.21OZ

SMD: 33023



HASHLEY
TEXTILES LLC



HOME GREEN TERMS WEB EMAIL



FABRIC
AMB-ARNOLD-375-
06-R

Comp:
100%cotton

WEIGHT:
11OZ

SMD: 33024



HASHLEY
TEXTILES LLC





HASHLEY

TEXTILES LLC



USA OFFICE :

HASHLEYTEXTILES

Unit 17204, 225 Fluor Daniel Dr., Sugarland TX 77479

info@hashleytextiles.com

FOR GLOBAL SOURCING:

ASHAR ALI | CELL : 281-623-7035

ashar@hashleytextiles.com

FOR MARKETING AND PARTNERSHIP:

NAJIA ASHAR | CELL : 281-623-7033

najia@hashleytextiles.com

FOR MERCHANDISING & QUALITY

HUSNAIN RAZA | CELL : +92 321 9944101

husnain@hashleytextiles.com

PAKISTAN OFFICE:

HASHLEYTEXTILES

Plot# 66 L, Kashmir Road, PECHS Block 2,
Karachi- 75400, Pakistan

For General Inquiry:

info@hashleytextiles.com

Visit our Website:

www.hashleytextiles.com

